

# Craft

## SUPPLIES

### *The home of woodturning*

Everything for the woodturner, woodturning tools, machinery, accessories, wood blanks all by mail order. Shop and tuition courses with ideal accommodation available.



## Turn a Bowl to Save a Tree.

At first sight this bold statement would appear to be a contradiction. Let us consider the options available to the tree; one of our few renewable natural resources.

Even in the unlikely event of the Western world agreeing to impose a ban on importing tropical hardwoods, this would not make a scrap of difference to a country like Brazil. Of the 12 million cubic metres of sawn timber produced, 11 is used inside Brazil. Indeed, it is highly likely that by imposing a ban, the value of timber would be devalued to such an extent that in order to obtain some revenue from the land, the rate of deforestation due to ranchers slashing and burning would be increased, and the greenhouse effect accelerated. The only practical way to control the rate of deforestation is to make it commercially viable to offer an alternative to low grade cattle ranching. The answer lies in sensible forestry policies.

Did you know that a sapling converts three times as much CO<sub>2</sub> to oxygen as a mature tree? Selective felling of mature trees to encourage young growth not only supplies a way of combating the greenhouse effect, it provides much needed foreign currency to the Third World.

So what are we doing about it at Craft Supplies? We are in consultation with forestry departments and government organisations all over the world. We try to develop trade with timber mills operating a sustainable policy. We back this up with personal visits and advice on the best utilisation of timber resources and reduction of waste. We are predominantly obtaining our timber direct from source to maximise the benefits to the producing region, in respect of yields from the timber, and encouragement to reforestation.

In conclusion, we ask you not to abandon the use of these beautiful timbers that adorn the following pages of this brochure. Do not abandon the rain forests to the ravages of Japanese loggers who supply, without conscience, their own hugely disposable market. They boast of using 37 million wooden chopsticks daily. For every cubic metre of concrete they require 4 square metres of plywood, 50 per cent of which is burnt and never reused.





cent of which is burnt and never reused . . .

## Wood

We are pleased to present the largest range of woods specially cut and prepared for woodturners, cabinet makers and musical instrument makers. The following pages with colour photographs describe the extensive range of woods that we have in stock, followed by sizes and prices. In all we have over 140 species in stock at any one time. Not all the woods we stock are photographed or listed and so we recommend a visit to our woodstore to see our wood for yourself.

### Collectors Sets

Two types of sets are available. Square sample sets, made up of 10 different woods, 2" sq. x 6" long. Hand sample sets, made up of 10 different woods, 4" x 2" x 3/8" (sawn size).

#### Kit 1

Cocobolo, Bocote, Ebony (African), Ebony (Macassar), Honduras Walnut, Karanda, Lignum Vitae, Partridgewood, Tulipwood, Ziricote.

#### Kit 2

Amazaque, Bubinga, Curupay, Etimoe, Imbuya, Mahogany (Cuba), Olivewood, Padauk, Pau Rosa, Zebano.

#### Kit 3

Brazilian Rosewood, Goncalo Alves, Honduras Rosewood, Jatoba, Kingwood, Lemonwood, Palo Santo, Purpleheart, Satinwood, Sonokeling Rosewood.

#### Kit 4

African Blackwood (turnery grade), Beli, Cherry (American), Coronilla, Hornbeam, Maple, Myrtle (Tasmanian), Oak (American), Walnut (American), Wenge.

KT931	Kit 1 Hand sample set	£5.59
KT932	Kit 2 Hand sample set	£2.83
KT933	Kit 3 Hand sample set	£3.78
KT934	Kit 4 Hand Sample set	£3.06
KT941	Kit 1 Square sample set	£18.88
KT942	Kit 2 Square sample set	£8.22
KT943	Kit 3 Square sample set	£11.96
KT944	Kit 4 Square sample set	£8.58

### Lace Bobbin Blanks

Lace makers bobbin blanks are offered in 25 different species. Please note they are only supplied in packs of ten. Size 5" x 3/8" x 3/8".

KT990	Blackwood (African)	£2.50
KT971	Bocote	£1.20
KT973	Cocobolo	£1.50
KT991	Coronilla	£0.80
KT992	Curupay	£0.80
KT974	Ebony (African)	£2.10
KT975	Ebony (Macassar)	£1.90
KT977	Honduras Walnut	£0.90
KT978	Jaguar's Ear	£0.90
KT993	Karanda	£0.90
KT980	Kingwood	£1.80
KT981	Lignum Vitae	£1.80
KT984	Olivewood	£0.80
KT994	Osage Orange	£1.00
KT995	Palo Santo	£1.00
KT985	Pau Rosa	£0.80
KT996	Piquia Amarello	£1.10
KT997	Pui	£1.10
KT998	Purpleheart (Colombian)	£1.60
KT972	Rosewood (Brazilian)	£1.20
KT976	Rosewood (Honduras)	£1.10
KT987	Rosewood (Sonokeling)	£0.90
KT986	Satinwood	£1.10
KT988	Tulipwood	£1.80
KT989	Ziricote	£1.50

Tagua Nuts and Cow Horn, see main wood price list for information and prices.





### Amazaque/Ovangkol

(Dia 7" x 1") (H) Guibourtia elie (Ivory Coast) SG 80

A medium sized tree generally 30m high and up to 45m diameter about 0.8m. Heartwood is yellow-brown to chocolate coloured, with grey to almost black stripes. Sapwood pale in colour and distinct from heartwood, sometimes fairly wide interlocked grain, moderately coarse texture.

Both air and kiln drying is fairly slow, but degrade is generally low. Saws moderately well, but the interlocked grain can make planing more difficult. Can be brought to an excellent finish. Used for high class joinery, cabinet work, furniture making and turnery.

WAM1724	Example Price	6" x 6" x 2"	£1.66	K/D
WAM1424	Example Price	6" dia x 2"	£1.96	K/D



### Banksia-Nut

(Dia 3" x 5") (H) Banksia grandis (Western Australia)

A bush or small tree which attains a height of up to 15m, but more commonly 5-10m. A small trunk 0.25-0.5m in diameter. Grows as an under storey tree within Jerram forests. The fruit produced by this tree is known as the Banksia nut. There are over 70 species of Banksia but only this one produces fruit large enough to be of any commercial value for turning. The fruit may be 4 to 9 inches long with an average size of 6 inches. The nuts must be picked from the tree when mature and this can take several years. The nuts are hard and solid, with seed pods running from the outside, towards the centre core. Easily turned giving a very unusual result.

WBA2900	Example Price (medium size)	£1.50
---------	-----------------------------	-------



### Blackheart Sassafras

(Dia 7" x 2") (H) Atherosperma moschatum (Tasmania) SG 53

A small to medium tree, 10-15m in height, occasionally attaining a height of 25m. Up to 0.75m in diameter. Found in South Eastern Australia and high rainfall areas of Tasmania. Heartwood is pale brown and often stained dark grey and deep brown to black. Caused by the loss of a branch or damage to the tree, allowing rainwater in whilst still growing. Straight grained, fine, even texture. Dries rapidly with some end checking. Easily machined and planed. Cuts with ease on a lathe. Used for turnery, carving and occasionally cabinet making.

WBL5724	Example Price	6" x 6" x 2"	£2.12	P/S
WBL5424	Example Price	6" dia x 2"	£2.42	P/S



### Ash

(Dia 11" x 3") (H) Fraxinus excelsior (UK) SG 71

A medium to large tree, reaches a height of 25-30m, a diameter of 0.6-1.5m. Heartwood is cream to olive brown, larger logs often have an olive heart which is usually irregular and streaked. Sapwood in smaller logs is usually not distinguishable from the heartwood. Straight to wavy grain, coarse texture. Dries rapidly with only slight end checking. Machines and turns well, takes an excellent polish. Used for some sports equipment (such as racquets), cabinet making, joinery, furniture and is often veneered, an easy wood to turn.

WAS1724	Example Price	6" x 6" x 2"	£1.16	K/D
WAS1424	Example Price	6" dia x 2"	£1.46	K/D



### Beli

(Dia 6" x 1") (H) Paraberlinia bifoliolata (Tropical West Africa) SG 80

A medium to large tree, with a diameter around 1.0m. Heartwood is light brown, striped with darker brown lines, similar to Zebano in appearance. Interlocked grain producing a striped figure on quarter sawn surfaces. Medium to coarse texture. Dries rapidly with little degrade. Machine cuts well, but tends to tear on quarter sawn surfaces when planing. Used for furniture and cabinet making. Selected logs are veneered. Suitable for turnery. Works and finishes well on the lathe.

WBE2724	Example Price	6" x 6" x 2"	£1.66	K/D
WBE2624	Example Price	6" dia x 2"	£1.96	K/D



### Blackwood - African

(Dia 9" x 2 1/2") (H) Dalbergia melanoxylon (Tanzania) SG 120

A small tree attaining a height of 15m, trunk diameter rarely above 0.4m. Many defects are present in the logs, making it difficult to cut clean wood. Heartwood is dark brown with predominant black lines which give an almost black appearance. Sapwood is pale yellow, giving a pleasant contrast. The grain may be straight or irregular, extremely fine texture. Dries slowly with a slight tendency to check. Difficult to saw and plane, being very dense. Used extensively for woodwind instruments, giving one of the best tones. Turns well, often used for carving (especially in Tanzania). Capable of an excellent finish.

WBL2550	Example Price	6" x 2" x 2"	£5.83	P/S
---------	---------------	--------------	-------	-----



### Bania

(Dia 5" x 3") (H) Swartzia bannia (French Guiana) SG 130

A small tree. Heartwood purplish black with lighter and darker streaks, sapwood is yellow. Straight grained, very fine texture. Dries slowly with a tendency to surface check. Very hard, one of the most dense woods known, and this reflects in its working. Sensitive to heat when finishing, and will check on the surface if allowed to get too warm when sanding. Capable of an extremely smooth finish. Used mainly for small articles and fancy turnery. A wood not often seen outside of South America.

WBA1724	Example Price	6" x 2" x 2"	£4.16	P/S
WBA1424	Example Price	6" dia x 2"	£4.16	P/S



### Birch-Masur

(Dia 5" x 5") (H) Betula alba (Finland) SG 67

A small to medium-sized tree reaching a height of 12-20m, diameter about 0.35m. Cream to white in colour, no distinction between heartwood and sapwood. The figure or markings are caused by larvae of the agromyzia carbonaria beetle attacking the cambium. This produces pith flecks giving a flame light effect, a very attractive figure. Straight to slightly curly grain, fine even texture. Dries rapidly with a tendency to end split and warp. Saws and machines well, a pleasant wood to work on a lathe. Used for high-class furniture, panelling, often rotary veneered, and turnery.

WMA5726	Example Price	6" x 6" x 2 1/2"	£3.63	P/S
WMA5426	Example Price	6" dia x 2 1/2"	£3.93	P/S



### Blackwood - Australian

(Dia 5 1/2" x 2 1/2") (H) Acacia melanoxylon (Tasmania) SG 67

A medium-sized tree growing to a height of 25-30m, diameter of 1.0m on average, grows in South Eastern Australia and Tasmania. Heartwood varies from a lustrous golden-brown to a reddish brown with dark brown streaks and growth rings. Straight to curly grain sometimes interlocked, medium texture. Wavy or curly grain produces a beautiful fiddle-back figure. Air dries well, with little degrade. Machines and planes well, although figured stock may tear when planed. Used for high quality furniture, panelling and ornamental turnery.

WBL3724	Example Price	6" x 6" x 2"	£2.21	P/S
WBL3424	Example Price	6" dia x 2"	£2.51	P/S





### Blue Gum – Southern

(Dia 7" x 3") (H) *Eucalyptus globulus* (South Australia) SG 90

A medium to large tree, size depends on rainfall in the area (may be from 15-20m in drier forest to 45m in higher rainfall areas). Heartwood is light yellowish brown. The piece shown here is figured and was cut near the crotch of the tree. The grain is usually interlocked, producing a mottled figure. Growth rings are distinctive. Moderately fine texture. Drying must be done with care in thick section, to avoid splitting. Planing and sawing can be difficult due to the density and interlocked grain of the timber. Very suitable for turnery, especially figured pieces.

WBL6724	Example Price	6" x 6" x 2"	£2.21	P/S
WBL6424	Example Price	6" dia x 2"	£2.51	P/S



### Box Elder – Burr

(Dia 6" x 3") (H) *Acer negundo* (North America) SG 49

A medium sized tree attaining a height of up to 30m, a diameter of 0.75m. Heartwood is creamy white, with little distinction from sapwood. The burl produced is tight and fine and beautifully figured. Straight to irregular grain, fine even texture. Machines and planes satisfactorily. Very easy to turn, capable of an excellent finish. The burl is used for veneer and turnery, the plain wood for flooring and furniture.

Example Price	£2.90 per kilo	P/S
---------------	----------------	-----



### Cedar – Brazilian

(Dia 6" x 3") (S) *Cedrela fissilis* (Brazil) SG 48

A moderately large tree attaining a height of around 30m, diameter is 1-2m above the buttresses. Heartwood is pale pinkish-brown to dark reddish-brown, sapwood is pale in colour, usually distinct from the heartwood. Straight to slightly interlocked grain, moderately coarse texture. Distinctive fragrant scent due to an oil content in this species. Dries rapidly but with a tendency to distort. Saws and planes satisfactorily. Easy to work on a lathe and can be brought to a good finish. Suitable for joinery, used for necks on some acoustic guitars and for turnery.

WCE2727	Example Price	6" x 6" x 3"	£2.18	P/S
WCE2427	Example Price	6" dia x 3"	£2.48	P/S



### Bocote/Mexican Rosewood

(Dia 6" x 2") (H) *Cordia gerascanthus* (Mexico) SG 96

A small tree very rarely growing bigger than 0.3m diameter. Heartwood is yellow brown with a green tinge when first cut, darkening on exposure to a mild brown with black lines and markings. Straight to irregular grain, fine even texture, the wood has a slight oily feel to the touch. Dries slowly with little degrade if care is taken. Saws moderately well but tends to dull the cutting edges quickly. Tears on quarter sawn surfaces when planing, and is easier to turn than machine. Can be brought to a very good finish. Used for high quality cabinet making.

WBO1724	Example Price	6" x 6" x 2"	£4.27	P/S
WBO1424	Example Price	6" dia x 2"	£4.57	P/S



### Boxwood – Genuine

(Dia 3 1/2" x 2 1/2") (H) *Buxus sempervirens* (France) SG 93

A small tree or shrub up to 5m (occasionally 9m) high. Usually only a shrub in the UK and more commonly seen as a hedge. Heartwood and sapwood are not distinguishable being light yellow in colour. Often larger sizes (0.12m diameter and up) have a darker centre being grey in colour. Straight to irregular grain, very fine even texture. Seasoning must be done with care, and out of sunlight, preferably in the dark. Larger logs should be cut down the centre to relieve stress when drying. Machines well. Excellent for turnery. Used for musical instruments, inlays, bandings and tool handles. A good carving wood.

Example Price	6" x 2" dia (log)	£0.33 P/S
---------------	-------------------	-----------



### Celery Top Pine

(Dia 7" x 1 1/2") (S) *Phyllocladus aspleniifolius* (Tasmania) SG 65

A medium sized softwood tree which grows in the cool temperate rain forests of Tasmania, attaining 30m in height with a diameter of 1.0m. Heartwood is light cream to pale yellow brown, darkening slightly on exposure. Growth rings are distinctive. The sapwood is not. Straight grain, fine even texture. Dries rapidly with little degrade. Not a true pine but similar to some in appearance. Saws, machines and turns with ease. Finish is good. Used for joinery, cabinet work and turnery.

WCE3724	Example Price	6" x 6" x 2"	£1.98	P/S
WCE3424	Example Price	6" dia x 2"	£2.28	P/S



### Bodo

(Dia 7 1/2" x 1 1/4") (H) *Detarium senegalense* (West Africa) SG 60

A large tree attaining a height of 45-50m with a trunk up to 1.5m in diameter. Heartwood is light orange-brown with darker brown bands. Sapwood is pale brown and wide (about 0.2m wide on a fully grown tree). Straight grained, with a moderately fine even texture. Dries fairly well but tends to split at the end of boards during seasoning. Saws and planes well, very easy to turn and finish. Used for furniture. A pleasant wood for turnery.

WBO2724	Example Price	6" x 6" x 2 1/2"	£1.91	K/D
WBO2424	Example Price	6" dia x 2 1/2"	£2.21	K/D



### Bubinga

(Dia 6 1/2" x 1 1/4") (H) *Guibourtia demeusei* (Cameroon) SG 88

A large tree up to 50m in height, diameter is usually in excess of 1.0m. Heartwood is light red-brown veined with pink or red stripes, sapwood is lighter being usually off-white. Interlocked grain with fine even texture. Air dries well, but sensitive to direct sunlight when seasoning. Kiln dries well with the very minimum of degrade. Saws well, tends to tear on quarter sawn surfaces when planing. Turns reasonably well and takes an excellent finish. A very stable wood making it a good cabinet making timber. Used also for handles, veneers and turnery.

WBU1724	Example Price	6" x 6" x 2"	£1.66	K/D
WBU1424	Example Price	6" dia x 2"	£1.96	K/D



### Cherry – American

(Dia 7" x 2") (H) *Prunus serotina* (North America) SG 58

A medium to large tree often attaining a height of 35m, diameter up to 1.0m. Heartwood is reddish-brown with distinct growth rings. Straight grain fine even texture. Dries rapidly but does tend to shrink during seasoning. Little other degrade. A pleasant wood to work, with either hand or machine tools. Used in cabinet and furniture making and high class joinery. An excellent wood for carving and turnery.

WCH2724	Example Price	6" x 6" x 2"	£1.89	K/D
WCH2424	Example Price	6" dia x 2"	£2.19	K/D





### Chestnut – Sweet

(Dia 8" x 1 1/2") (H) *Castanea sativa*  
(United Kingdom) SG 54

A medium tree attaining a height of 30m with a diameter of 1-1.5m. Heartwood is pale brown to biscuit, similar to Oak but without the fine rays. Straight to wavy grain, coarse texture. Dries slowly, has a tendency to collapse or honeycomb. Easily worked with both hand and machine tools. Gives a good finish. Used for furniture and joinery. Selected logs are veneered. Suitable for turnery and carving.

WCH3724	Example Price	6" x 6" x 2"	£1.30	K/D
WCH3424	Example Price	6" dia x 2"	£1.60	K/D



### Curupay

(Dia 5" x 2 1/2") (H) *Anadenanthera macrocarpa*  
(Paraguay) SG 1.05

A medium-sized tree with a reasonably straight bole, diameter is 0.6-0.9m. Heartwood pale brown darkening on prolonged exposure to reddish brown with almost black streaks, sapwood yellow-brown or pale pink. Irregular or interlocked grain, fine even texture. Dries slowly with a tendency to split in large sections. Machining and sawing can be slightly difficult due to the density and interlocked grain. This wood can be used for decorative cabinet work. An excellent timber for turnery.

WCU1724	Example Price	6" x 6" x 2"	£2.21	P/S
WCU1424	Example Price	6" dia x 2"	£2.51	P/S



### Ebony – Philippine

(Dia 5" x 2") (H) *Diospyros philippinensis*  
(Philippines) SG 1.04

The tree can attain a height of 20m with a diameter of 0.75m. Heartwood is grey-black with streaks of yellow, purple and brown, often present is a fine jet black line. Sapwood is wide, being off white to pale yellow in colour giving a strong contrast to the heartwood. Straight grained with a fine even texture. Dries slowly with a slight tendency to surface check. Moderately difficult to machine, turns well and is capable of a high gloss finish. Used in cabinet and furniture making, for musical instruments and turnery.

WEB4724	Example Price	6" x 6" x 2"	£6.66	P/S
WEB4424	Example Price	6" dia x 2"	£6.66	P/S



### Cocobolo

(Dia 6" x 2") (H) *Dalbergia retusa* (Mexico) SG 1.10

A medium sized tree with fluted trunk attaining a height of 20m to 30m and a diameter of 0.5m. Heartwood varies from bright orange to deep red with an attractive variegated stripes of yellow, orange and black, darkening on exposure. Irregular and variable grain with a fine texture. Capable of an excellent finish. Drying is slow and care must be taken to avoid splits and surface checking. Very stable once dry. Used for turnery and small cabinet work (though it is sometimes difficult to glue), woodwind instruments (not suitable for the mouthpiece), wooden jewellery and decorative work.

WCO1724	Example Price	6" x 6" x 2"	£4.73	P/S
WCO1424	Example Price	6" dia x 2"	£5.03	P/S



### Ebony – African

(Dia 4" x 2") (H) *Diospyros crassiflora* (Nigeria) SG 1.03

A small tree, reaching a height of 15-18m with an average diameter of 0.6m. Heartwood is jet black but many trees have lighter shades, speckles or stripes of grey or dark brown. The sapwood is wide, pale brown to grey-white in colour. Straight to slightly interlocked grain, very fine texture. Saws and machines satisfactorily, but is easier to turn. Dries well in small section, tends to split in large section. Used for carving, turnery and for musical instrument parts, such as finger boards for guitars and violins. Popular for butts on cues, inlays and saw cut veneers.

WEB1724	Example Price	6" x 6" x 2"	£8.75	P/S
WEB1424	Example Price	6" dia x 2"	£8.75	P/S



### Ebony – Sri Lankan

(Dia 5 1/2" x 4") (H) *Diospyros ebenum* (Sri Lanka) SG 1.17

A medium size tree with a diameter up to 0.5m. Heartwood is jet black to often slightly striped with brown or grey. This is one of the harder ebonyes. Sapwood is grey, often streaked with black. Straight to interlocked grain, very fine even texture. Dries slowly, splits in large section. Difficult to saw and plane, with a marked tendency to dull the blades quickly. Easier to turn than to machine. Gives an excellent finish. Used for cue butts, musical instruments, inlays and turnery.

WEB3724	Example Price	6" x 6" x 2"	£9.79	P/S
WEB3424	Example Price	6" dia x 2"	£9.79	P/S



### Cocuswood

(Dia 6" x 2") (H) *Brya ebenus* (Jamaica) SG 1.20

Attains a height of only 8m. It has a diameter rarely larger than 0.2m. Heartwood is brownish-yellow when first cut darkening slightly on exposure, with darker and lighter streaks. Sapwood is light yellow and often wide for the size of the tree. Straight to irregular grain, fine even texture. Dries slowly with a tendency to surface check. This wood is not available in large sizes and is therefore used mainly for turnery. Ranked by some more highly than African Blackwood for its tonal qualities in the woodwind instrument trade. Now in short supply.

Example Price – Logs	– £3.90 per kilo	P/S
----------------------	------------------	-----



### Ebony – Macassar

(Dia 7" x 2 1/2") (H) *Diospyros celebica*  
(Celebes Islands) SG 1.09

Often a larger tree than the African Ebony, attaining a height of 20m or more. In poor growing conditions it is sometimes only a shrub. Heartwood is dark brown to black, streaked throughout with darker and paler bands and stripes, being grey to yellow brown. Straight to slightly irregular grain, fine, even texture. Slow drying with a tendency to check. Sawing can be difficult due to the hardness of the wood. Used for decorative work, veneers, cabinet making, musical instruments, excellent for turnery.

WEB2724	Example Price	6" x 6" x 2"	£6.66	P/S
WEB2424	Example Price	6" dia x 2"	£6.66	P/S



### Elm – Burr

(Dia 8 1/2" x 2 1/2") (H) *Ulmus spp*  
(United Kingdom) SG 58-78

Ten species of Elm grow in Europe. The trees are usually large attaining a height of 30 to 40m. The more common species are English, Dutch and Wych Elm. Heartwood is dull brown, clearly defined from the lighter-coloured sapwood. Irregular growth rings and cross-grain are more common in English and Dutch Elm. Wych Elm has a green tinge or stripe and is usually straighter grained, coarse in texture. Used for furniture, cabinet making, boat building and exterior work. Often well burred logs are veneered.

WEL1724	Example Price	6" x 6" x 2"	£1.16	K/D
WEL1424	Example Price	6" dia x 2"	£1.46	K/D





### Mountain Ash – Burr

(Dia 7 1/4" x 2 1/2") (H) *Eucalyptus regnans* (Tasmania) SG 68

The tallest hardwood tree known with an average height of 55-75m but has been recorded at 100m. A very straight trunk with an average diameter of 2.5m. Occurs in Victoria and Tasmania. The burr produced by this species is spectacular and is often very large, if not a whole section of the tree. The burr is tight, fine and even, but care must be taken when drying as splitting occurs easily. Only suitable for veneers and turnery as Mountain Ash in burr form tends to be unstable. Easy to turn and capable of a good finish, but tends to warp out of shape once finished. This usually adds to its attraction.

WMO2724	Example Price	6" x 6" x 2"	£3.58	P/S
WMO2424	Example Price	6" dia x 2"	£3.88	P/S



### Mountain Ash – Figured

(Dia 5" x 2") (H) *Eucalyptus regnans* (Tasmania) SG 68

The tallest hardwood tree known with an average height of 55-75m but has been recorded at 100m. A very straight trunk with an average diameter of 2.5m. Occurs in Victoria and Tasmania. Figured lumber is common due to the immense size causing compression. The best figure is at the base or buttress, where compression is at its highest. Heartwood is pale pink or straw coloured, sapwood is not distinguishable. Straight to very highly figured grain (the piece shown here is of poor figure), coarse uneven texture. Must be dried with care to avoid collapse and warping. Saws well, planing depends on figure. Very easy to turn.

WMO1724	Example Price	6" x 6" x 2"	£2.90	P/S
WMO1424	Example Price	6" dia x 2"	£3.88	P/S



### Mountain Mahogany

(Dia 5" x 6") (H) *Cercocarpus ledisiolus* (North America) SG 90

A small tree or shrub, with a diameter up to 0.25m. Heartwood is orange-red, often with dark brown streaks, sapwood is pale yellow giving a pleasant contrast. Irregular grain, fine even texture. Dries slowly with a tendency to split. Turns well, takes a very good finish. Used in turnery and in some musical instruments.

Example Price (logs)	£2.30 per kilo	P/S
----------------------	----------------	-----



### Muhuhu

(Dia 4" x 5") (H) *Brachylaena hutchinsii* (Tanzania) SG 93

The tree can grow up to 25m in height but is usually 12-18m, with a diameter of 0.5m. The bole is usually fluted and twisted making reasonable section lumber very difficult to produce. Heartwood is yellow-brown, darkening on exposure to medium brown. Sapwood is grey-white, making a good contrast to the heartwood. Interlocked wavy grain, fine even texture. Dries rapidly with a tendency to end split and surface check. The wood is oily to touch and fragrant. Saws satisfactorily. Reduced angles are required on cutting edges for machining. A very good timber for turnery, polishes and finishes very well.

WMU4724	Example Price	6" x 6" x 2"	£1.98	P/S
WMU4424	Example Price	6" dia x 2"	£2.28	P/S



### Mulga

(Dia 5 1/2" x 2 1/2") (H) *Acacia aneura* (Australia) SG 10

A shrub of 2-5m tall to a small tree of 8m high, diameter usually not more than 0.3m. Grows mainly in Central Australia in arid land areas with low rainfall of less than 0.25m per year. Heartwood is dark brown with a strong contrast from the golden yellow sapwood. Straight to interlocked grain, fine even texture. Should be dried slowly to avoid splits. Saws moderately well, planing is difficult when the grain is interlocked. A very pleasant wood for lathe work. Used locally for fencing and boomerangs. Suitable for woodwind instruments and turnery.

WMU1724	Example Price	6" x 6" x 2"	£2.90	P/S
WMU1424	Example Price	6" dia x 2"	£3.20	P/S



### Muninga

(Dia 5 1/2" x 3") (H) *Pterocarpus angolensis* (Tanzania) SG 63

A medium sized tree up to 25m in height, diameter of 0.5m. Grows throughout the Savana forests of Tanzania. Heartwood is golden-brown with darker reddish brown streaks, with a pale grey sapwood. Irregular and interlocked grain, medium coarse uneven texture. Easily dried with very little degrade, one of the most stable timbers in the world. Works well with hand and machine tools, turns easily, takes a good finish. Used for furniture, domestic flooring, high-class joinery and is often veneered. An excellent turnery wood.

WMU2724	Example Price	6" x 6" x 2"	£1.66	P/S
WMU2424	Example Price	6" dia x 2"	£1.96	P/S



### Musk – Figured/Burr

(Dia 6" x 2") (H) *Olearea argophylla* (Tasmania) SG 65

A small understorey tree of wet colder climate forests in Victoria and Tasmania. Light brown in colour, when freshly cut turns to a bright violet, but this fades quickly. The wood has a wide variety of grain, being highly figured or burred with a birds eye figure, fine even texture. The sapwood splits very badly during drying and should be removed. The heartwood dries well with little degrade. Large section wood is difficult to cut without some defects. Occasionally veneered, an excellent wood for turnery. Easy to finish but not with a high gloss.

WMU3724	Example Price	6" x 6" x 2"	£3.88	P/S
WMU3424	Example Price	6" dia x 2"	£3.58	P/S



### Myall – Western

(Dia 5" x 2") (H) *Acacia papyrocarpa* – formerly *A. sowdenii* (Australia) SG 10

A small arid land tree, attaining a height of only 8m, with a diameter of 0.3m. Grows in dry interior regions of South Australia. Heartwood is dark chocolate brown with dark brown or black lines or streaks. Sapwood is yellow to light brown. Interlocked grain very often mottled, fine even texture. Pleasant violet-like odour when freshly cut. Dries slowly with little degrade in small sections. Hard and dense, this shows during machining, having a severe dulling effect on blades, a pleasant turnery wood, capable of an excellent finish.

WMY3724	Example Price	6" x 6" x 2"	£2.90	P/S
WMY3424	Example Price	6" dia x 2"	£3.20	P/S



### Myrtle – Burr Australian

(Dia 5 1/2" x 2") (H) *Nothofagus cunninghamii* (Tasmania) SG 70

A tall tree attaining a height of 30-40m with a diameter of 1.5-2.5m (in poor growing conditions the tree may only grow to 12-18m in height). Heartwood is pink reddish brown, with a white sapwood. The burr is fine and even often with a curly effect in the grain. Straight to wavy grain, fine even texture. Dries slightly uneven at times with a tendency to surface check. Saws well, planing depends upon the grain. Curly grain may tear out. A very easy wood to work on a lathe. Used for furniture and cabinet making, suitable for carving and turnery. Selected logs are often veneered.

WMY2724	Example Price	6" x 6" x 2"	£3.58	P/S
WMY2424	Example Price	6" dia x 2"	£3.88	P/S





### Narra

(Dia 6½" x 2") (H) *Pterocarpus indicus*  
(Philippines) SG 66

A medium sized tree which grows to a height of 25-30m with a diameter of 1.0m. Smaller trees tend to produce more highly figured wood. Heartwood varies from light golden yellow to brick red. A member of the Padauk family, which produces a very beautiful burr called Amboyna. Moderately fine texture, interlocked grain produces a mottled figure. Dries well with little degrade, very stable. Saws and machines with ease, works well on the lathe. Used for quality furniture and cabinet making, musical instruments, often sliced for veneers. Suitable for turnery and fancy articles.

WNA1724	Example Price	6" x 6" x 2"	£2.17	P/S
WNA1424	Example Price	6" dia x 2"	£2.47	P/S



### Olivewood – Spanish

(Dia 6" x 2") (H) *Olea europaea* (Spain) SG 89

A long-lived tree with a short bole often with numerous holes and cavities and gnarled. The tree grows to about 15m high with a diameter of about 0.25m. Heartwood is light brown to dark brown with irregular streaks of grey, brown and black giving a marble like appearance. Irregular to interlocked grain, fine even texture. Saws well, but tends to tear when planing. One of the easiest woods to turn. Dries very slowly with a tendency to split and crack in large section. High oil content. Avoid leaving the shavings in contact with steel, as Olivewood is very corrosive.

WOL1724	Example Price	6" x 6" x 2"	£3.82	P/S
WOL1424	Example Price	6" dia x 2"	£4.12	P/S



### Osage – Orange

(Dia 7" x 2") (H) *Maclura pomifera* (North America) SG 85

A small to medium sized tree, grows to 20m in height in good growing conditions. The trunk is 0.3m in diameter, often of poor shape and twisted. Heartwood is bright yellow to orange with streaks, darkening on exposure to russet-brown. Sapwood is white and contrasts sharply from the heartwood. Straight to irregular grain, moderately fine. Saws and machines satisfactorily. Tends to work better on the lathe. Dries fairly quickly but tends to end crack. Used in North America for fence posts, being very durable. An excellent wood for long bows, suitable for turnery.

WOS1724	Example Price	6" x 6" x 2"	£3.13	P/S
WOS1424	Example Price	6" dia x 2"	£3.42	P/S



### Padauk – African

(Dia 9" x 1½") (H) *Pterocarpus soyauxii*  
(Cameroon) SG 72

A medium to fairly large tree attaining a height of 35m with a diameter of 1.0m. Heartwood is a vivid red when freshly cut, toning down to a medium to dark purple-brown on exposure, often with fine black lines. Sapwood is wide and greyish-white giving a distinctive contrast to the heartwood. Dries fairly rapidly with little degrade, kiln dries well. Straight to somewhat interlocked grain, coarse texture. Saws and machines well despite being hard and cuts well on the lathe. Tends to be dusty, finishes very well. Used for high class joinery, cabinet making and furniture.

WPA1724	Example Price	6" x 6" x 2"	£1.66	K/D
WPA1424	Example Price	6" dia x 2"	£1.96	K/D

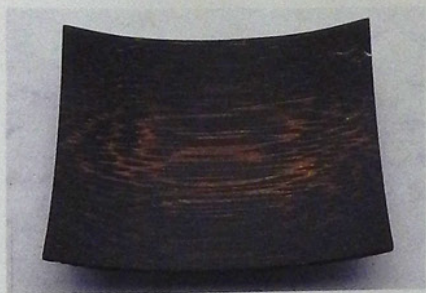


### Padauk – Andaman

(Dia 8" x 2") (H) *Pterocarpus dalbergoides*  
(Andaman Islands) SG 76

A large tree of up to 40m in height, with a diameter of up to 1.1m. Heartwood varies from yellow to brick red, streaked with dark brown. Sapwood is wide and grey in colour. Interlocked grain produces a mottled figure. Medium to coarse texture. Saws moderately well but tends to tear when machining. An excellent turnery wood, takes a very good polish. Dries well, thick section may surface check. Used for quality furniture, cabinet making, superior joinery and flooring and occasionally veneers. The wood is in limited supply.

WPA2724	Example Price	6" x 6" x 2"	£2.31	P/S
WPA2424	Example Price	6" dia x 2"	£2.51	P/S



### Palmwood

(Dia 4½" x 1½") *Caryota urens* (Burma) SG 115

A large palm tree found in the lower Himalayas only flowering once in their course of existence. The wood extracted from this species is very different from other trees. It is not the heartwood that is of any value, it is the wood surrounding it. The centre of the tree is soft and not of any real use. The wood is very hard with black streaks which are quadrangular or triangular in section called fibro-vascular bundles. Irregular grain, coarse in texture, dries slowly with little degrade. Although the wood is dense, it saws quite well. Turns moderately well, with a slightly coarse but unusual finish. Used for fancy articles and turnery.



### Palo Santo – Lignum Vitae

(Dia 4½" x 2") (H) *Buñesia sariensis* (Paraguay) SG 11

A small tree attaining a height of only 9m and a diameter of 0.3m (occasionally up to 0.7m). Heartwood is olive green to brown with variegated stripes. This timber has an oily feel and is fragrant. Sapwood is usually narrow and off-white in colour. Interwoven grain, fine even texture. Dries very slowly and is prone to checking. Difficult to saw, having a severe dulling effect on blades. Planing quarter sawn surfaces is only possible with a reduced angle on the blades. Far easier to turn than to machine. Finishes very well. Used as a substitute for genuine Lignum Vitae but is not as oily. Suitable for turnery, flooring and fancy articles.

WPA3724	Example Price	6" x 6" x 2"	£3.81	P/S
WPA3424	Example Price	6" dia x 2"	£4.11	P/S

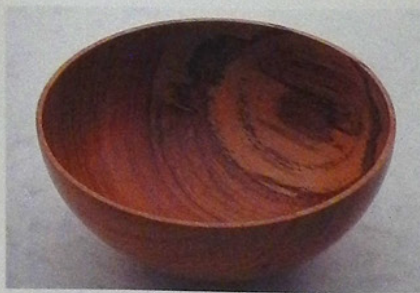


### Pau Rosa – East African

(Dia 6½" x 3") (H) *Swartzia madagascariensis* (Tanzania) SG 96

A medium sized tree, attaining a height of 20m, and a diameter of 0.4m. Heartwood is a deep red with lighter and darker streaks and stripes. Sapwood is off-white and narrow. Straight to slightly interlocked grain, fine even texture. Dries slowly with a tendency to end split and surface check. Planing quarter sawn surfaces requires reduced blade angles. Saws satisfactorily and turns well. Used for construction in Tanzania, and once dry for furniture making. Suitable for turnery.

WPA4724	Example Price	6" x 6" x 2"	£1.75	P/S
WPA4424	Example Price	6" dia x 2"	£2.05	P/S



### Pau Rosa – West African

(Dia 6" x 3") (H) *Swartzia fistuloides* (Ivory Coast) SG 96

A medium to large tree, reaching a height of 30m, a diameter of up to 0.8m. Heartwood is light orange red to a deep red, especially near the sapwood, with lighter and darker fine lines and streaks. Sapwood is white to pale-yellow and generally narrow. Straight to interlocked grain, fine even texture. Dries slowly with a marked tendency to end split and surface check while seasoning. Saws moderately well, tears on quarter sawn surfaces when planing. Cuts need to be light and blades sharp, works better on the lathe. Available in larger sizes than E. African Pau Rosa. Suitable for quality furniture and turnery.

WPA6724	Example Price	6" x 6" x 2"	£1.75	P/S
WPA6424	Example Price	6" dia x 2"	£2.05	P/S





### Pear – Native Australian

(Dia 6" x 4") (S) *Xylomelum occidentale*  
(Western Australia) SG 75

A small to medium tree with a diameter of 0.3m, the trunk is usually of poor shape. Heartwood is blood red when fresh cut darkening on exposure to a maroon red, sapwood is white to off-white. Broad rays give a distinctive figure on quarter sawn surfaces. Straight grained, slightly coarse texture. Dries rapidly with very little or no degrade. Saws and machines easily, cuts well both with hand tools and on the lathe. Suitable for cabinet making and carving, an excellent turnery wood.

WPE3724	Example Price	6" x 6" x 2"	£2.35	P/S
WPE3424	Example Price	6" dia x 2"	£2.65	P/S



### Pink Ivory

(Dia 7" x 2") (H) *Berchemia zeyheri* (South Africa) SG 1 04

A small to medium-sized tree rarely exceeding 0.4m diameter, now very rare as the felling of this tree has been stopped for several years. Heartwood varies from light pink to dark pink and red, with lighter and darker shades of yellow and red, sometimes grey. Sapwood is cream to off-white and wide in comparison to the tree. Straight to irregular grain, fine even texture. Dried rapidly with little degrade, the sapwood tends to split. Difficult to saw and machine, dulling blades quickly, pleasant to work on the lathe. Commercially one of the rarest woods in the world. Used for ornamental turnery, inlays and carving.

WPI1724	Example Price	6" x 6" x 2"	£17.29	P/S
WPI1424	Example Price	6" dia x 2"	£17.29	P/S



### Pui

(Dia 5 1/2" x 2 1/2") (H) *Tabebuia rufescens* (Colombia) SG 96

A small to medium sized tree with a diameter of 0.5m. Heartwood is olive-green with darker almost black fine lines, darkening on exposure to a green-brown. Sapwood is light yellow and gives a pleasant contrast. High oil content comparable to *Lignum Vitae*. Straight to slight irregular grain, fine even texture. Dries well with little degrade. Saws and machines fairly well, cuts easily on the lathe. Sanding is difficult due to the oil content which clogs the paper. Used in South America for construction, suitable for turnery and carving.

WPU2724	Example Price	6" x 6" x 2"	£3.28	P/S
WPU2424	Example Price	6" dia x 2"	£3.58	P/S



### Pear – Steamed

(Dia 9" x 2") (H) *Pyrus communis* (Germany) SG 70

A small to medium-sized tree, occasionally growing to 20m in height with a diameter of 0.4m, generally larger in Europe than in the United Kingdom. Heartwood and sapwood have little distinction being pink to pink-brown in colour, with fine growth rings present. Straight to wavy grain with a fine even texture. Slow in drying with a tendency to warp. Saws moderately well, planes and machines well, very easy to work on the lathe. Used for furniture, some musical instruments and carving, excellent for turnery.

WPE1724	Example Price	6" x 6" x 2"	£1.66	P/S
WPE1424	Example Price	6" dia x 2"	£1.96	P/S



### Piquia Amarelo

(Dia 7" x 1 1/4") (H) *Aspidosperma* spp (Brazil) SG 75

A small tree rarely growing larger than 0.4m in diameter. Heartwood and sapwood are not distinguishable, being a bright yellow in colour. One of the most yellow woods known. Straight to slightly interlocked grain, very fine even texture. Difficult to produce large sizes as there are often high stresses in the logs, which open up when being cut. Dries rapidly with a tendency to surface check. Saws easily but tends to tear on quarter sawn surfaces when planing. Cuts easily on the lathe but sensitive to heat when finishing. Used for fancy articles, inlays and turnery, excellent wood for small carvings.

WPI2724	Example Price	6" x 6" x 2"	£3.13	P/S
WPI2424	Example Price	6" dia x 2"	£3.43	P/S



### Purpleheart – Brazilian

(Dia 6" x 2") (H) *Peltogyne venosa* (Brazil) SG 86

The tree varies in size according to locality, can obtain a height of 38-45m, up to 1.2m in diameter. Heartwood is dull brown when freshly cut, changing rapidly to purple on exposure, gradually toning down to dark brown over a period of time. Sapwood is cream to off-white. Straight to wavy or interlocked grain, moderately fine texture. Dries slowly with a tendency to surface check and end split. Thin section can be kiln dried successfully. Sawing and machining is made slightly difficult as it tends to dull cutting edge quickly. Used for heavy construction, flooring, boat building and turnery.

WPU1724	Example Price	6" x 6" x 2"	£1.53	P/S
WPU1424	Example Price	6" dia x 2"	£1.83	P/S



### Pernambuco

(Dia 6" x 2") (H) *Caesalpinia echinata* (Brazil) SG 1 20  
*Gulandina echinata*

Also known as Brazilwood. A medium to occasional tree of coastal Brazil. Heartwood is bright orange to orange red often with darker markings and streaks. Sapwood is nearly white. Generally straight grained with a fine even texture. Dries slowly with a slight tendency to surface check. Difficult to saw and plane with severe dulling effect on blades. Turns moderately well, capable of an excellent finish. Prized as the best wood for violin bows. Used for ornamental turnery. Also a famous dye wood, occasionally veneered.

WPE2550	Example Price	6" x 2" x 2"	£1.25	P/S
---------	---------------	--------------	-------	-----



### Plane/Lacewood

(Dia 11" x 1 1/4") (H) *Platanus hybrida*  
(United Kingdom) SG 62

A medium sized tree up to 30m in height, with a diameter of 1.0m. Grows well in cities as a park land tree. Heartwood is pale reddish-brown, strong medullary rays present, showing a distinct figure on quarter sawn surfaces. Known as lacewood when timber is cut on the quarter. Sapwood is not distinct from the heartwood. Quick in drying, though tends to distort, splitting is minimal. Easily worked with both hand and machine tools. Works well on the lathe. Polishes to an excellent finish. Used for furniture, cabinet making, joinery, panelling and turnery. Sliced for veneers on the quarter sawn face.

WPL1724	Example Price	6" x 6" x 2"	£1.53	K/D
WPL1424	Example Price	6" dia x 2"	£1.83	K/D



### Purpleheart – Colombian

(Dia 6" x 1 1/4") (H) *Peltogyne paniculata*  
(Colombia) SG 1 10

A small to medium tree rarely above 0.6m in diameter for this species of Purpleheart. Heartwood is a dull brown, very quickly changing on exposure to a bright purple. This species of Purpleheart is the brightest in colour often with an attractive ripple present. Straight to interlocking, often wavy grain, very fine even texture. Dries slowly with a slight tendency to surface check in large sections. Very difficult to saw with severe dulling effect on cutting edges. Planing can be made easier with reduced cutting angles. Turns well and takes an extremely good glass like finish.

WPU3724	Example Price	6" x 6" x 2"	£4.73	P/S
WPU3424	Example Price	6" dia x 2"	£5.03	P/S