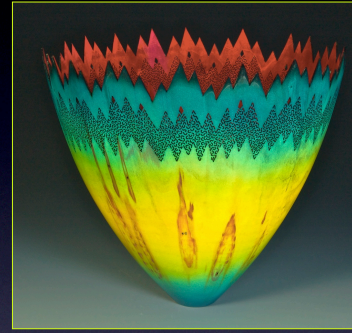


# From Tree to Vessel



## The Making of a Pierced Vase

Michael Allison  
*Wood Turned Art*



Unseasoned, green log  
sections



Mounted on the lathe





Roughing out the exterior of the vessel



Removing the inside core



Turning the 'very thin'  
inside rim





Refining the inside of the vase



Refining the exterior at the base





Completion of the turning phase of the thin wall vase



Cutting the rim with a mini jigsaw





Blackening the rim with a pyrography tool



Piercing, using high speed air tool and one mm. bit





Piercing: close up

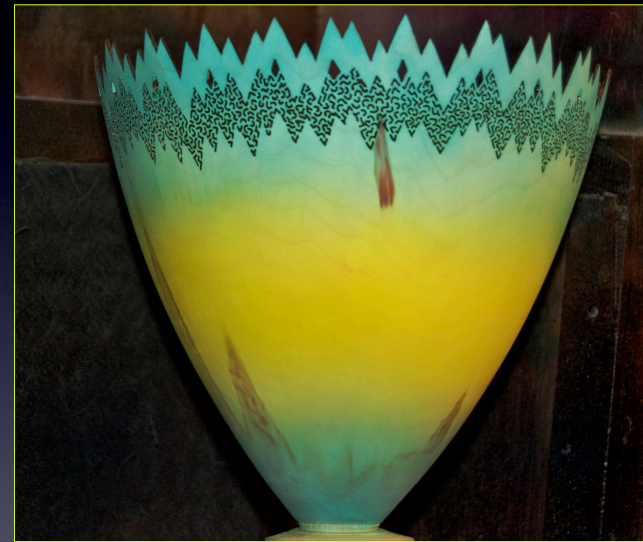


‘Ragging on’ water based dye



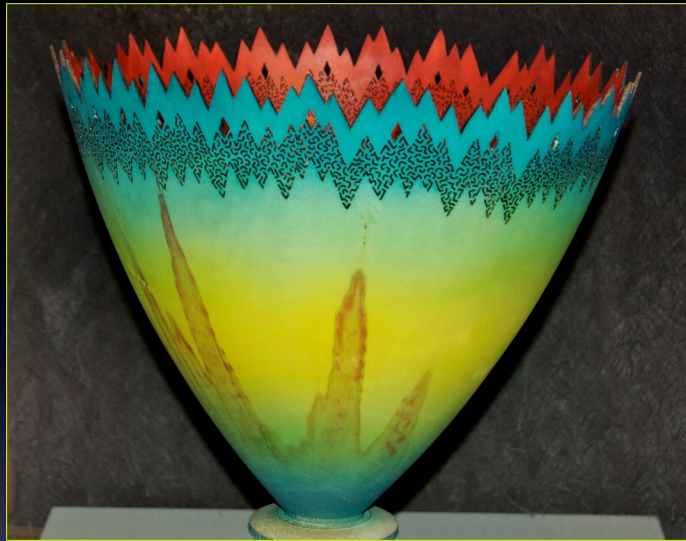


Initial layer of airbrushed yellow dye

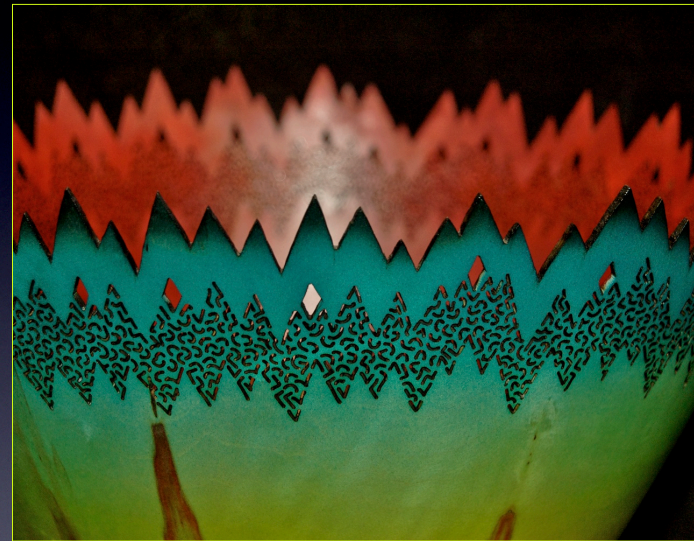


Building up the 'teal burst' finish

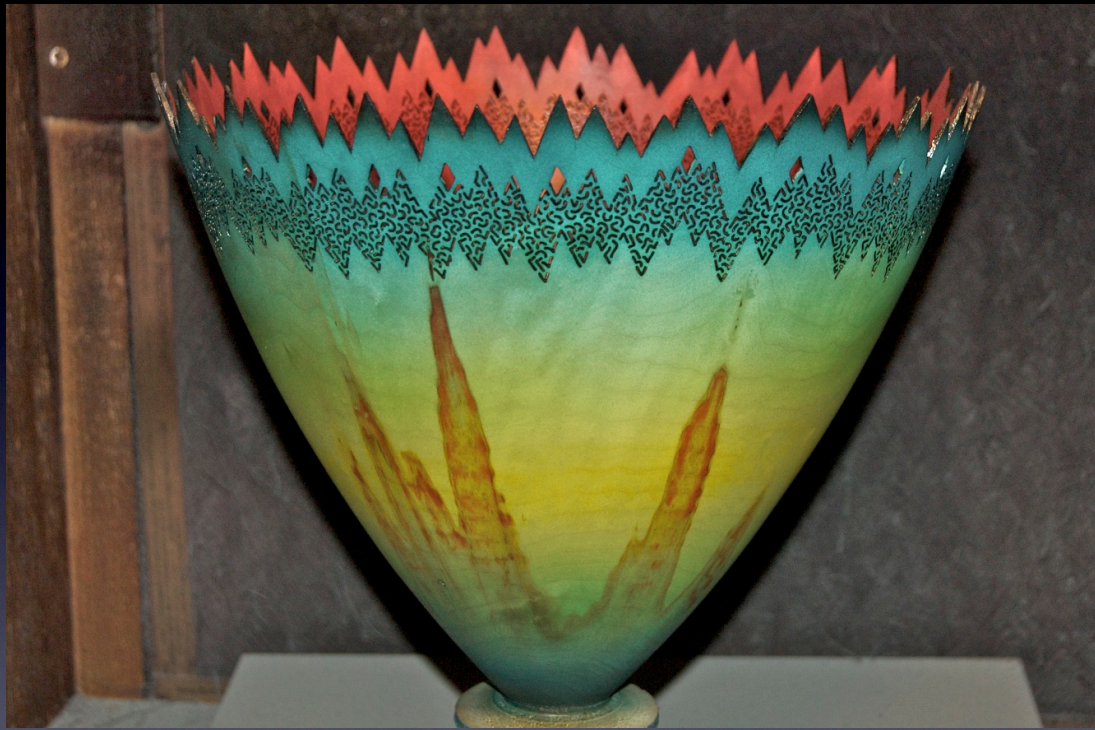




Deepening the teal

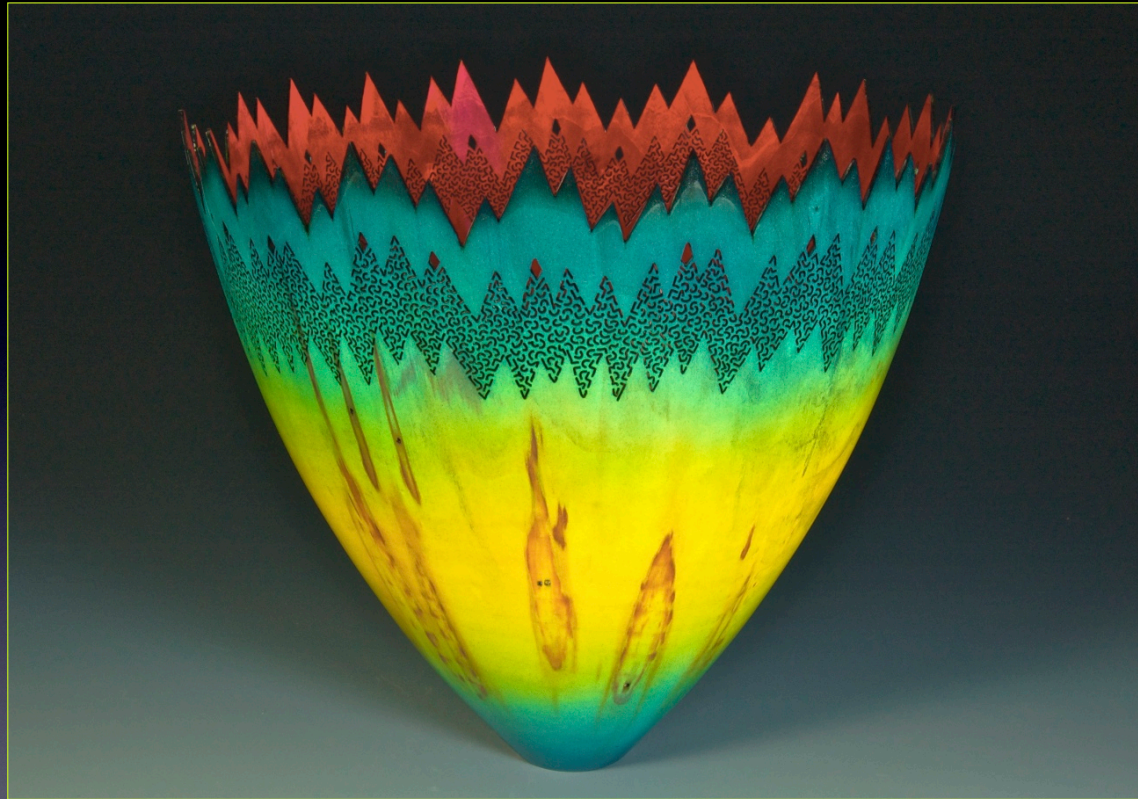


Black accents on points



Color completed: ready for clear lacquer





Pierced box elder vase: 12"W x 11"H